



PCORI Evaluation Group

Third Meeting
February 28, 2014

Patient-Centered Outcomes Research Institute

Agenda for Today

PEG Responsibilities and Focus

- Recap
- Show how they fit into the bigger picture

Measuring Our 3 Strategic Goals

- Review revised metrics
- Determine what we can reflect on our Dashboard in 2014
- Discuss preliminary plans for early projects

Draft Evaluation Framework

- Did we capture your questions?
- Do you agree with our preliminary prioritization?

Evaluation Framework: Our Questions and How We Will Answer Them

Evaluation Questions	Metrics/ Indicators	Methods	Sources
What do PCOR and PCORI stakeholders want/need to know?	For each question, what are we measuring and how will we measure it?	What approach will we take to answering this question?	From where will we get the data to answer this question?

Our Evaluation Framework: 3 Kinds of Questions

1

What are we doing?

Are we doing it efficiently and effectively?

Are we on track?

2

Are we accomplishing our goals?

Producing useful information?
Speeding its uptake?
Influencing research?

3

How do the various components of PCORI's approach contribute to reaching its goals and achieving its mission?

PEG Initially Focused on 2 of 3 Kinds of Questions

What are we doing?

Are we doing it efficiently and effectively?

Are we on track?

Are we accomplishing our goals?

Producing useful information?
Speeding its uptake?
Influencing research?

How do the various components of PCORI's approach contribute to reaching its goals and achieving its mission?

Measuring Our 3 Strategic Goals

What are we doing?

Are we doing it efficiently and effectively?

Are we on track?

Are we accomplishing our goals?

Producing useful information?
Speeding its uptake?
Influencing research?

How do the various components of PCORI's approach contribute to reaching its goals and achieving its mission?

Are we accomplishing our goals?

Sample Questions

- Are we producing high quality information that is **useful** to people for making choices/decisions about health?
- Is the information that we produce being taken-up rapidly and **used** widely?
- Are we **influencing** others to do more research that is patient-centered and useful?

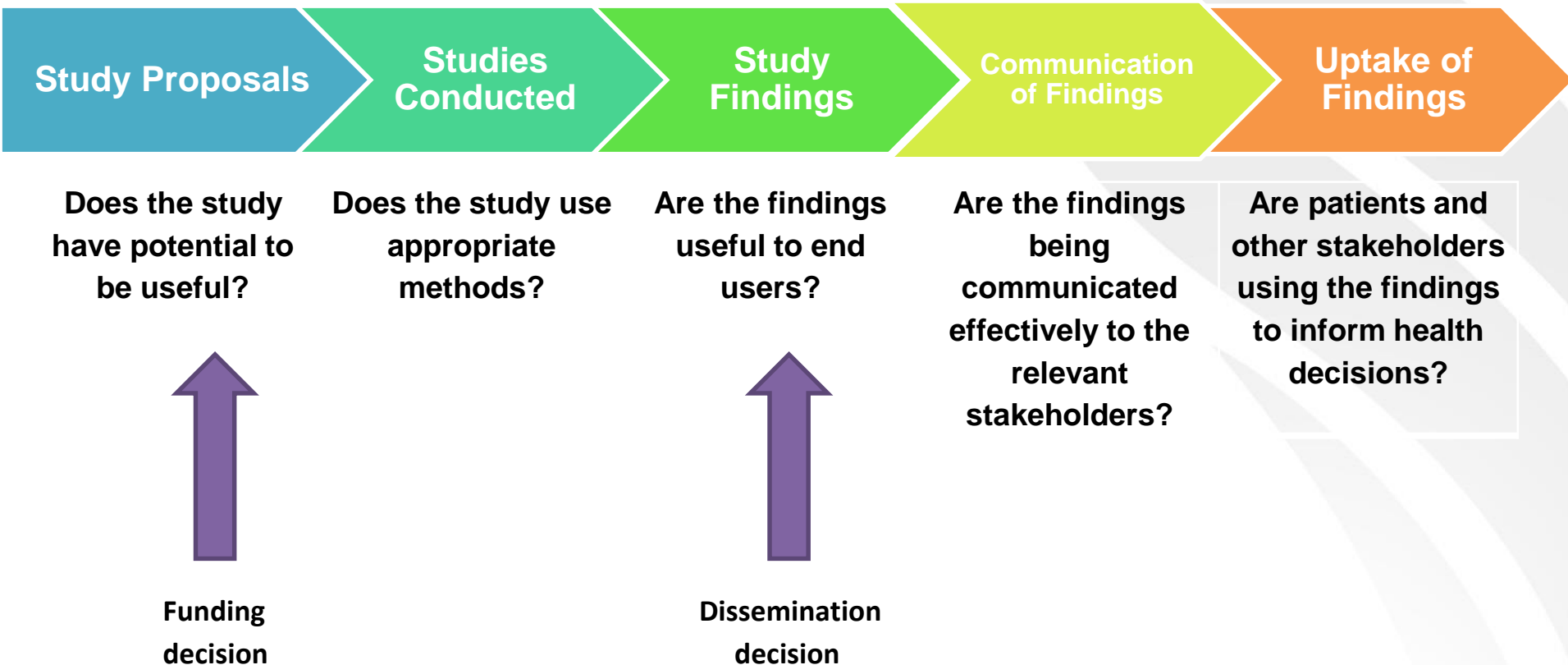
Relationship to Strategic Plan: Focus is mainly on our Goals

Our Dashboard is the primary reporting mechanism

Will take a while to be able to measure; Meanwhile we are focused on several projects that will allow us to say something as early as possible about usefulness, use, and influence

Next steps: Finalize Usefulness Criteria, Develop protocols for Usefulness studies, Same for Uptake and Influence

Usefulness Criteria: How do they fit into the bigger picture?



*Our proposed criteria are intended to characterize both **potential** and **actual** usefulness from the perspective of a variety of users.*

Revised Proposed Usefulness Criteria

- People who would use the information have been identified
- Specific uses for the information have been identified
- People who would use the information have shaped the question(s)
- Study assesses treatment options that are relevant for the people who would use the information
- Study assesses the outcome(s) assessed that matter for the people who would use the information
- Study can / does provide a clear answer to the question
- Results can be/are timely and durable
- Results can be / are tailored to individuals or subgroups
- Results can be scaled / spread beyond the study setting

Usefulness: What can we say about it in 2014?

- 🌐 How our portfolio stacks-up against our criteria for potential usefulness
 - How the studies we are funding compare to those we didn't
 - How our portfolio compares to others
- 🌐 What stakeholders think about the potential usefulness of our portfolio
 - For example, what stakeholders think about the set of pediatric studies we are funding

Proposed Usefulness Criteria

- Are they comprehensive but parsimonious?
- Are they mutually exclusive?
- Do the proposed projects make sense?
- OK to proceed to test them and develop the study protocols?

Revised Measures of Use

Dissemination

(Measure for all PCORI funded studies)

- Results reported back to study participants
- Access to PCORI study report
- Presentations:
 - Scientific/professional audiences
 - Lay audiences
- Bibliometrics:
 - # of Publications
 - Time to publication
 - Impact factor
 - Citations
- Alternative metrics for key groups (patients, clinicians, payers, etc.):
 - # manuscript downloads
 - # manuscript bookmarks
 - # social media recommendations and comments

Uptake

(Measure for a subset of PCORI funded studies)

- Incorporation into:
 - Systematic reviews
 - Patient and consumer education materials
 - Graduate Medical Education (GME) or Continuing Medical Education (CME)
 - Practice guidelines
 - Decision making infrastructure (e.g. electronic decision aids, clinical reference tools)
 - Payer policies
 - Institutional, local, state, and national policy

Practice or Behavior Change

(Measure for small set of exemplar studies)

- Change in practice or behavior among key groups (patients, clinicians, payers, etc.)

Uptake and Use: What can we say about it in 2014?

- No PCOR results until 2016
- We will have completed Pilot Projects in 2015
- How about uptake of our Methodology Standards in the meantime?

Proposed Measures of Use

- Are they reasonable?
- Are there others we should consider?
- Any ideas for what we can do while waiting for completed PCOR studies?

Revised Measures of Influence

- *Endorsement, Promotion, and Dissemination of PCORI work*
- Use of PCOR Methods Evidence
- *Use of Methodology Standards for Patient-Centeredness*
- *Use of PCORI Approaches to Topic Generation & Research Prioritization and Merit Review*
- Use and support of PCORnet
- *Use of PCORI guidance re: Patient-Centered CER*
- *Use of PCORI-supported curricula or training*
- *Collaborations/Co-funding with other funders*

Blue italics indicate items that we can start measuring now

Influence:

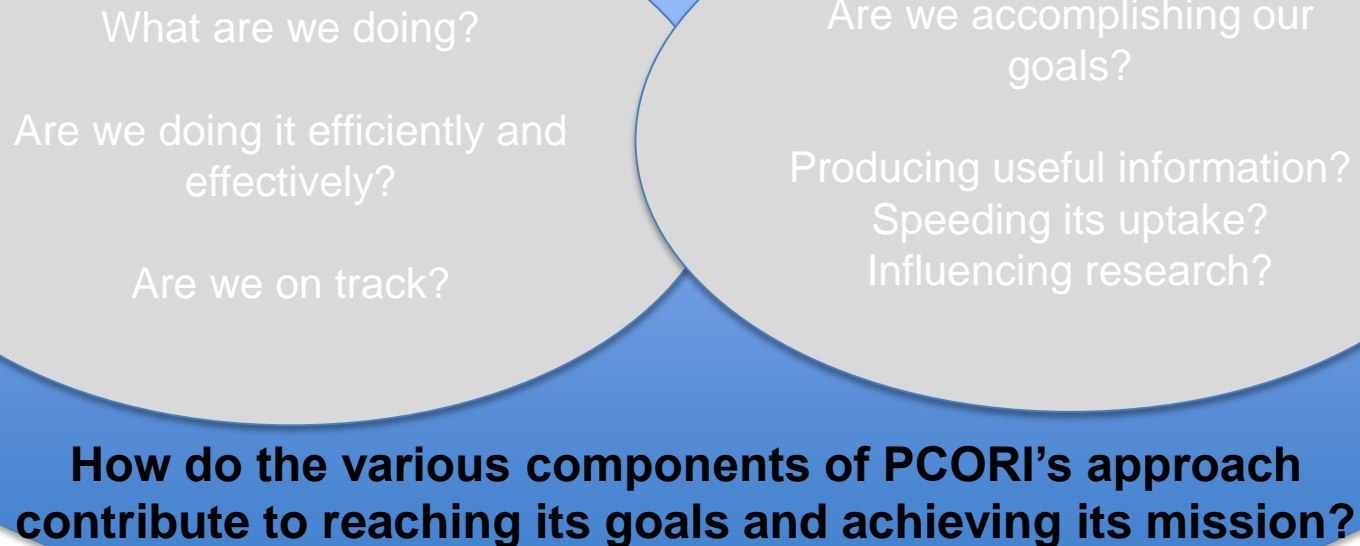
What can we look for in 2014?

- Have our partnerships with AHRQ (fibroids) and NIH (falls) influenced them? If so, how?
- Has applying for/receiving PCORI funding changed the way that researchers think about/conduct research? If so, how?
- Has working with PCORI (Workshops, Merit Review, etc.) changed the knowledge, attitudes, or behaviors of various stakeholders and other funders of research?

Proposed Measures of Influence

- Are they reasonable?
- Are there others we should consider?
- Do the proposed projects make sense?
- OK to proceed to test them and develop the study protocols?

Draft Evaluation Framework



How do the various components of PCORI's approach contribute to reaching its goals and achieving its mission?

🌐 Sample Questions

- What is the relationship between our Merit Review process and the potential usefulness of the studies in our portfolio?
- What is the relationship between Engagement in Research and the usefulness of our portfolio?
- Does PCORnet facilitate CER that is more patient-centered, efficient, and useful?

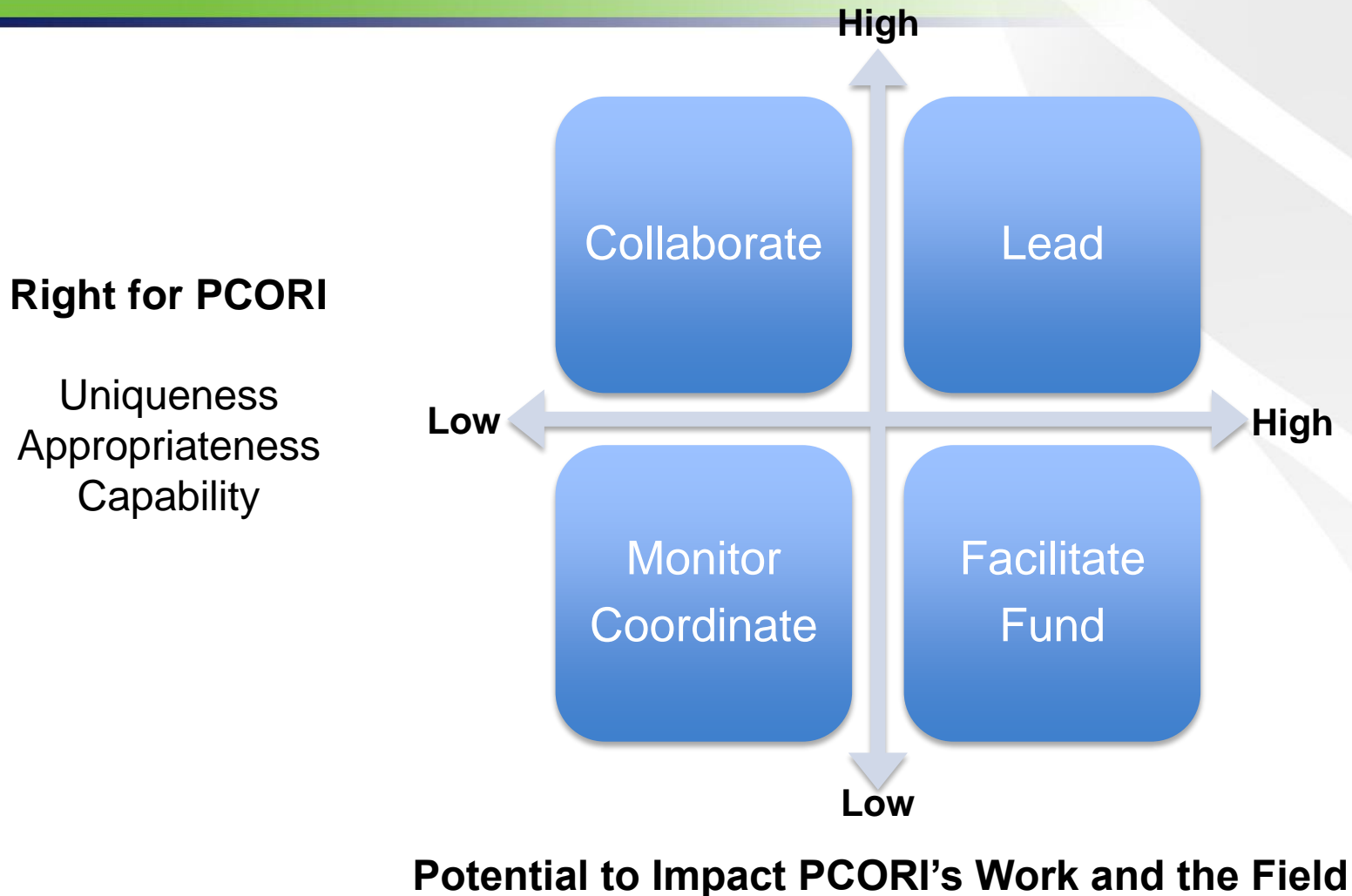
🌐 Relationship to Strategic Plan: Focus is mainly on Goals and Impact (Improving Health)

🌐 A variety of reporting mechanisms ranging from Dashboard to peer-reviewed publications

🌐 Will take a while to be able to measure; Meanwhile we are focused on several projects that will allow us to say something as early as possible about, for example, impact of Engagement on early steps in research process

🌐 Next steps: Finalize Evaluation Framework, Develop protocols for studies, initiate studies

Prioritize Evaluation Questions



How do the various components of PCORI's approach contribute to reaching its goals and achieving its mission?

What can we start looking at now?

Merit Review

- What is the effect of the following on our portfolio?
 - Stakeholder **Engagement** in review
 - Our Merit **Criteria**
 - Our review **Processes**

Engagement

- What is the effect of patient and stakeholder engagement:
 - On Study **Design**?
 - On **Recruitment and Retention**?
 - On the **Experience of Study Participants**?

Draft Framework

- Did we capture your questions?
- Do you agree with our preliminary prioritization?

Next Steps

Focus on the Framework

- Is it complete?
- Are the models correct?
- Is the prioritization reasonable?

For Priority Projects

- Develop Metrics, Choose, Methods, Identify Data Sources
- Develop Protocols

Appendix

- Slides pertaining to the component of our framework that is not a major focus of the PEG at the moment

Our Evaluation Framework

What are we doing?

Are we doing it efficiently and effectively?

Are we on track?

Are we accomplishing our goals?

Producing useful information?
Speeding its uptake?
Influencing research?

How do the various components of PCORI's approach contribute to reaching its goals and achieving its mission?

What are we doing?

Are we doing it effectively and efficiently?

Are we on track?

Sample Questions

- Are our studies adhering to our Methodology Standards?
- Are our Pipeline to Proposal awards leading to applications from new partnerships?
- Are our projects meeting their milestones?
- How do participants rate our events?

Relationship to Strategic Plan

- Focus is mainly on Inputs, Activities/Processes, Outputs

Who's Participating Directly in Measurement and Reporting?

- All of us!
- Every individual, team, department, committee has metrics and targets
- They roll up to Chiefs/Committees and then to Board

Notes

- Performance Assessments, Internal Reports, Dashboards
- Provides important data/information to allow us to eventually answer our questions about accomplishing our goals and our approach
- Ongoing, Not a major focus of the PEG
- Next steps: Finalize 2014 BOG Dashboard, Develop Committee Dashboards or similar

Example: Are our projects on track?

