

# Getting Physicians Involved in Patient-Centered Research:

## A Webinar Showcasing Involvement of Medical Specialty Societies in PCORI Awards

---

November 4, 2016



PATIENT-CENTERED OUTCOMES RESEARCH INSTITUTE

The logo for the Council of Medical Specialty Societies (CMSS). It consists of the letters "CMSS" in a bold, blue, sans-serif font. The "C" and "M" are a darker blue, while the "S" and "S" are a lighter blue.

# CMSS

Council of Medical  
Specialty Societies

# Welcome and Introductions

---



We welcome your questions and comments via the chat function on the right side of your screen



We welcome your comments via Twitter to @PCORI and #PCORI



An archive of this webinar will be posted to <http://www.pcori.org/get-involved/pcori-in-practice/> following this event.



# Today's Presenters

---



**Jean R. Slutsky, PA,  
MSPH**

Chief Engagement and  
Dissemination Officer;  
Program Director,  
Communication and  
Dissemination Research

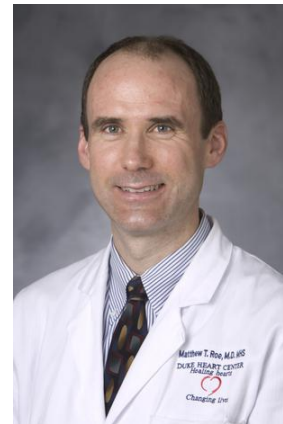


**Norman Kahn, MD,  
Executive Vice-  
President and CEO,  
Council of Medical  
Specialty Societies  
(CMSS)**



**Vincent Pellegrini, MD**

Principal Investigator,  
Medical University of  
South Carolina



**Matthew Roe, MD**

Principal Investigator,  
Duke University



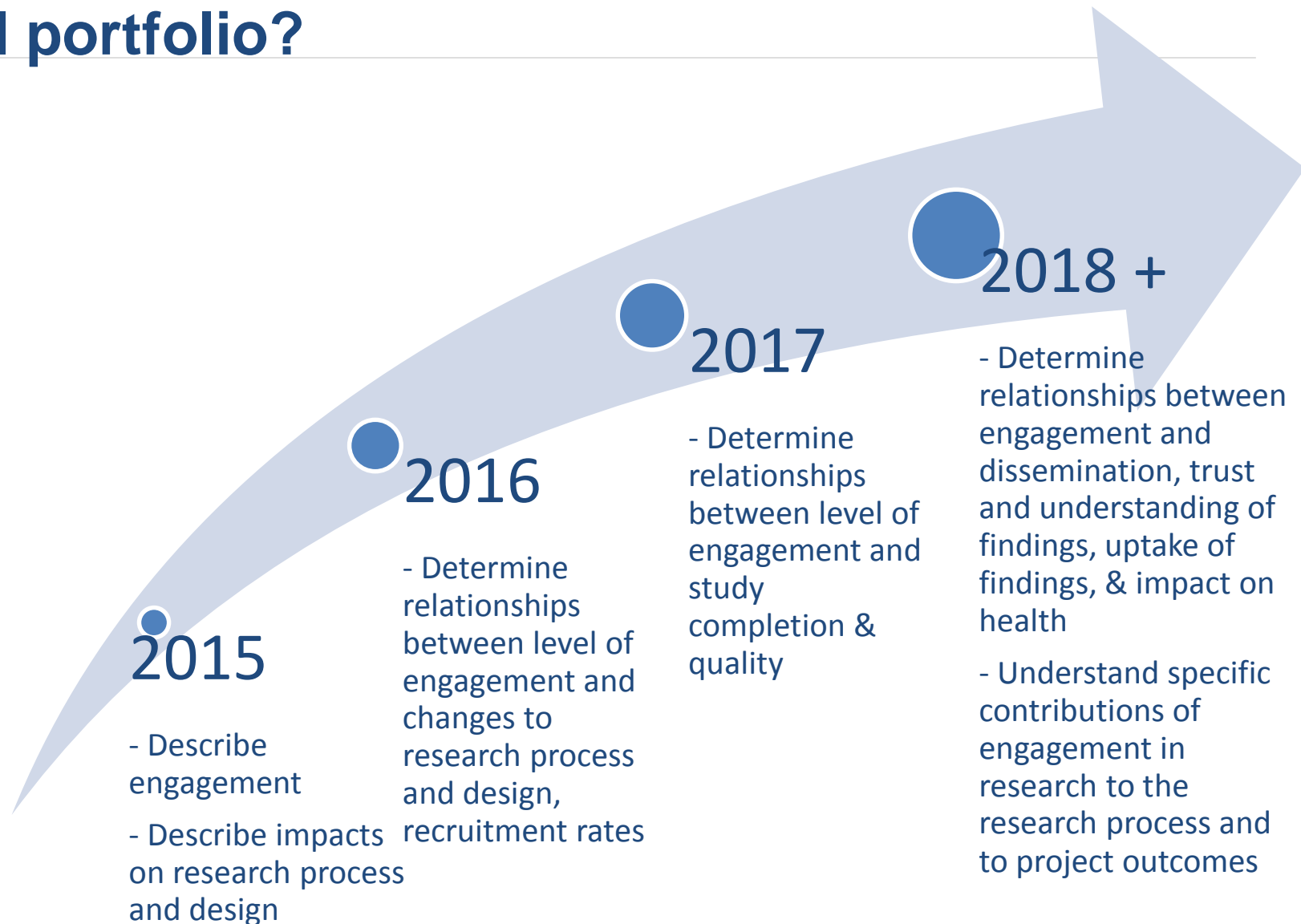
# Agenda

---

- General Description of Engagement in PCORI Portfolio
- Opportunities for Specialty Society Engagement
- PCORI Case Studies of Involvement Physician and Specialty Involvement in the PEPPER Trial
- Physician and Specialty Involvement in the ADAPTABLE Trial
- Q & A



# What can PCORI show about engagement in the PCORI portfolio?



# Examples of Specialty Society Engagement

---

- Letter of support
- Intervention use of member-designed course/materials
- Dissemination support
- Ongoing support of this research
- Stakeholder or advisory panel
- Involvement in study design
- Use of member-sponsored network
- Focus group representation
- Data collection and management
- Funded research leading up to this proposal
- Evaluation of findings
- Research partner (co-PI)
- Implementation and dissemination
- Use of member's data/database
- Use of societies for recruitment



# Evaluating the Impact of Patient-Centered Oncology Care

**Principal Investigator:** Sarah Scholle, MPH, DPH

- \$2 million in 3 years, awarded in 2013

## Overview

- Pilots and evaluates a Patient-Centered Oncology Care model, created by a coalition on of organizations and a broader multi-stakeholder advisory group, to see if it improves patient experiences and quality of care, and decreases undesirable events.

## Methods

- This trial will study 10 oncology practices in southeastern Pennsylvania. Each practice will receive implementation support during 24-month demonstration period, and will be evaluated using surveys, quality measures, and measures of emergency department and hospital use.

## *Physician Engagement*

### Member

American College of Physicians

American Society of Clinical  
Oncology

### Role

Intervention uses member-  
designed course/materials

Stakeholder or advisory panel



# Continued Anticonvulsants After Resolution of Neonatal Seizures: A Patient-Centered Comparative Effectiveness Study

**Principal Investigator:** Renee Shellhaas, MD, MS

- \$3 million in over 4 years, awarded in 2016

## Overview

- Addresses the question of the ideal length of time to treat children with acute symptomatic neonatal seizures with phenobarbital to avoid neurodevelopmental side effects.

## Methods

- This large-scale observational study uses propensity score analysis strategy, allowing for causal inferences to determine the optimal duration of medical treatment for neonatal seizures.

## *Physician Engagement*

### Member

American Academy of Pediatrics

### Role

Letter of support to review evidence based findings





# PATient Navigator to rEduce Readmissions (PARtNER)

**Principal Investigator:** Jerry Krishnan, MD, PhD

- \$2 million in 3 years, awarded in 2013

## Overview

- Engages stakeholder groups at an minority-serving institutions (MSI), including patients/caregivers, in an iterative process to develop a CHW-based Patient Navigator (CHW-Navigator) toolkit tailored to their needs to augment the benefits of a QI program to reduce readmission. We will compare the effectiveness of an integrated CHW-Navigator on the patient experience, 30-day readmissions rates, and other outcomes

## Methods

- This randomized clinical trial with 1,100 patients pilots and modifies a program created using stakeholder focus groups (patients/caregivers, clinicians, hospital administrators, representatives of SHM BOOST).

*Physician Engagement*

Member

Society of Hospital Medicine

Role

Implementation and  
dissemination



# A Practical Intervention to Improve Patient-Centered Outcomes after Hip Fractures Among Older Adults (Regain Trial)

**Principal Investigator:** Mark D. Neuman, MD, MS

- \$12 million over 5 years, awarded in 2015

## Overview

- Compares short- and long-term outcomes of two common approaches to anesthesia for hip fracture: spinal or general anesthesia, in order to directly and immediately affect patient decision making, care, and outcomes .

## Methods

- This randomized control trial assigns 1,600 patients undergoing hip fracture surgery at 18 US hospitals to spinal or general anesthesia interventions.

## *Physician Engagement*

### Member

American Society of Anesthesiologists

### Role

Stakeholder or advisory panel



# Other Projects with Physician Involvement

---

- Patient-Centered Home Exercise Program for Peripheral Artery Disease
- Patient-Centered, Risk-Stratified Surveillance After Curative Resection of Colorectal Cancer
- Patient Empowered Strategy to Reduce Asthma Morbidity in Highly Impacted Populations (PESRAMHIP)
- Privacy-Preserving Analytic and Data-Sharing Methods for Clinical and Patient-Powered Data Networks
- Improving Methods for Linking Secondary Data Sources for CER/PCOR
- A Comparison of Treatment Methods for Patients Following Total Knee Replacement
- The Comparative Effectiveness of Patient- and Provider-Directed Strategies for Increasing Shared Decision-Making in Reproductive Health Care
- Heart Health 4 Moms: Engaging Women with a History of Preeclampsia to Reduce their Risk for Cardiovascular Disease
- Improving Asthma Outcomes Through Stress Management
- Improving Palliative and End-of-Life Care in Nursing Homes
- A Comparative Effectiveness Trial of Optimal Patient-Centered Care for US Trauma Care Systems
- Evaluating Cancer Survivorship Care Models
- A Patient-Centered PaTH to Addressing Diabetes: Impact of State Health Policies on Diabetes Outcomes and Disparities
- Shared Decision Making in Parents of Children with Head Trauma: Head CT Choice
- Advancing Stated-Preference Methods for Measuring the Preferences of Patients with Type 2 Diabetes



# Physician and Specialty Society Involvement in the PEPPER Trial

---

Vincent Pellegrini, MD

Principal Investigator

Medical University of South Carolina



# Comparative Effectiveness of Pulmonary Embolism Prevention after Hip and Knee Replacement (PEPPER): Balancing Safety and Effectiveness

**Principal Investigator:** Vincent Pellegrini, MD

- \$15 million over 4½ years, awarded in 2015

## Overview

- Compares the effectiveness of various blood thinners for preventing pulmonary embolism (PE) and the risk of bleeding associated with their use following total hip or knee replacement. Incorporates the preferences of patients with respect to the chance of the poor results due to bleed vs. lowering the risk of a life-threatening clot.

## Methods

- Approximately 25,000 patients will be enrolled at 25 centers over 2.5 years at a rate of 333 patients per site per year. Each center will randomize patients to all 3 groups (most commonly used regimens in North America).

## Stakeholder Engagement

- Patients as partners in investigation
- Patient advocacy groups
- Practicing physicians
- Physician specialty organizations

## *Physician Engagement*

### Member

American Association of Hip and Knee Surgeons, American Academy of Orthopaedic Surgeons, The Hip Society, The Knee Society, Orthopaedic Research Society

### Role

Stakeholder or Advisory panel



# Comparative Effectiveness of Pulmonary Embolism Prevention after Hip and Knee Replacement (PEPPER): Balancing Safety and Effectiveness

**Principal Investigator:** Vincent Pellegrini, MD

- \$15 million over 4½ years, awarded in 2015

## Stakeholder Involvement

- AAOS, ACCP, ORS, HS, KS, AAHKS letters of support
- Research committee chairs of HS and KS on SC
- SC members from HS, KS, ACCP, NATF, NBKA
- Collaborator planning meeting, 11/2011, for protocol development
- Surgeon site PI meeting to refine protocol

## Methods

- Consensus development around protocol formulation
  - Agents
  - Regimens – dosing , duration
  - Pneumatic compression devices (PAB role)
- Sabbatical for CMMS data mining / study justification
- Site selection/elimination: requirement to randomize
- Dartmouth Community Medical School – patient input
- Preop patient survey about participation in trial

## *Physician Engagement*

### Member

American Association of Hip and Knee Surgeons, American Academy of Orthopaedic Surgeons, The Hip Society, The Knee Society

### Role

Stakeholder or Advisory panel



# Physician and Specialty Society Involvement in the ADAPTABLE Trial

---

Matthew Roe, MD

Principle Investigator

Duke University



# Aspirin Dosing: A Patient-Centric Trial Assessing Benefits and Long-term Effectiveness (ADAPTABLE)

**Principal Investigator:** Matthew Roe, MD

- \$15 million in 3 years, awarded in 2015

## Overview

- A pragmatic clinical trial comparing the effectiveness of two daily doses of aspirin widely used to prevent heart attacks and strokes in individuals living with heart disease.

## Methods

- This trial will constitute the initial randomized comparative-effectiveness trial conducted by PCORnet: The National Patient-Centered Clinical Research Network. Randomizes 20,000 patients assigned in a 1:1 ratio of two widely used doses of aspirin (81mg and 325mg).

## *Physician Engagement*

### Member

American College of Cardiology

### Role

Dissemination support





Questions?

# Thank you!

For questions please contact:

Susan Hildebrandt, MA

Director, Stakeholder Engagement

[shildebrandt@pcori.org](mailto:shildebrandt@pcori.org)

[www.pcori.org](http://www.pcori.org) 

[info@pcori.org](mailto:info@pcori.org) 

