

Patient-Centered Outcomes Research for Employees (PCORE) of Milwaukee's Near West Side



Stakeholder panel #1, November 2, 2018

PCORE project leadership team



Dan Pinto



Abiola Keller



Kristin Kipp



Keith Stanley



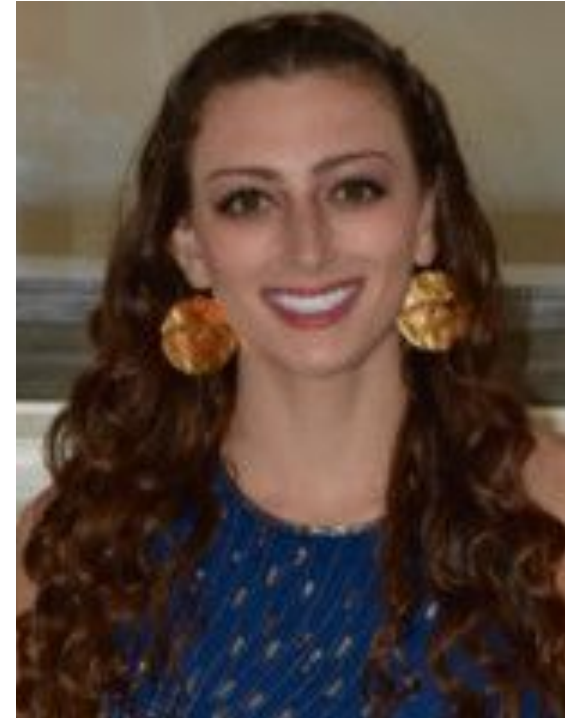
Pat Kennelly

PCORE Resource Officer

Draft project documents

- MOUs
- Mission
- Vision
- Roles
- Responsibilities

Coordinate with Organizational leads about PCORE related tasks.



Marissa Lovell

External Evaluator

**Rebecca Berman, PhD, Senior Co-Investigator,
Leonard Schanfield Research Institute CJE
SeniorLife**

As a researcher and program evaluator, Dr. Berman is committed to identifying priorities for building knowledge that can be used to effectively address the concerns, needs and preferences of older people and their families.

Dr. Berman has also been an independent research and evaluation consultant since 1990, providing evaluation technical assistance and training to social service providers. She has authored a number of articles and is a frequent presenter at national conferences.



Introductions of panel members

- NWSP Anchor panel members

| Name | Position | Entity |
|----------------|--------------------------------|--------------------------------------|
| Kelly Sutton | Wellness Program Manager | Aurora Health Care |
| Beth Mrozinsky | Director Workplace Environment | HarleyDavidson |
| Bonny Ryan | Sr. Manager, Benefits | MillerCoors |
| Matthew Paulus | Director of Risk Management | Marquette University |
| Judy Haack | Human Resources Director | Potawatomi Business Development Corp |

Introductions of panel members

- Researcher/clinician panel members

| Name | Position | Entity |
|------------------------|--|----------------------------------|
| Laura Linnan, PhD | Director, Carolina Collaborative for Research on Work & Health, University of North Carolina | Research Stakeholder |
| Edith Burns, MD | Medical College of Wisconsin, Zablocki VA | Clinician/researcher stakeholder |
| Chris Simenz, PhD | Clinical Professor, Marquette University | Research Stakeholder |
| Jennifer Fink, PhD, MS | Assistant Professor, Master of Health Administration program Co-Director, University of Wisconsin-Milwaukee | Research Stakeholder |

The big picture

- We want healthy employees
- We already make health decisions and spend a lot of resources on health
- We want to explore best in class processes that include the end-user, our employees who use the services we provide or obtain.



“Our objective is to improve the lives of all our constituents, and that includes the employees”

Keith Stanley – Executive Director, Near West Side Partners

About PCORI

- Vision

- Patients and the public have the information they need to make decisions that reflect their desired health outcomes.

- Mission

- The Patient-Centered Outcomes Research Institute (PCORI) helps people make informed health care decisions, and improves health care delivery and outcomes by producing and promoting high integrity, evidence-based information that comes from research guided by patients, caregivers and the broader health care community.

EUGENE WASHINGTON PCORI ENGAGEMENT AWARDS PROGRAM FRAMEWORK

ENGAGEMENT PRIORITIES

Develop a PCOR community for engagement in PCOR

Engage community in PCOR

Promote dissemination of PCOR findings

KEY PROGRAM AREAS

Capacity Building

- Equip patients and other stakeholders with the skills necessary to meaningfully participate in CER as partners throughout the research process; and/or
- Develop infrastructure and partnerships for disseminating and implementing PCORI-funded research findings

Dissemination Initiatives

- Support organizations and communities in actively disseminating PCORI-funded research findings. Aimed at spreading awareness and increasing knowledge of evidence from PCORI-funded research, targeted directly to patients, clinicians, and others who can use this information to inform their healthcare decisions.

What is patient-centered outcomes research?

Patient-Centered Outcomes Research (PCOR)

- Engaging patients, family caregivers, clinicians, and other healthcare stakeholders as active partners in research, helping research teams decide what to study and how to study it.
- By engaging the end users of study results throughout the research process, we are more likely to focus on asking the right questions, study the outcomes that matter most to patients, and produce the useful and relevant results that are more likely to be used in practice.

PCORE goals

Short Term Outcomes

- Create an environment that encourages dialogue between PCORE Panel members: anchor partner stakeholders, researchers, and clinicians.
- The Panel will learn about PCOR/Comparative Effectiveness Research
- Researchers and clinicians will gain the capacity to design patient centered research questions and draw on workers with multiple chronic conditions (MCC)

PCORE goals

Long Term Outcomes

- The Panel will be a sustainable and translatable model, easily disseminated, for incorporating the voice of workers with MCC into research.
- Workers with MCC will gain knowledge of how to contribute meaningfully to the development, implementation, and dissemination of research.
- PCORE members will have the capacity to engage with PCOR research and champion the unique experience of workers with MCC to external researchers.

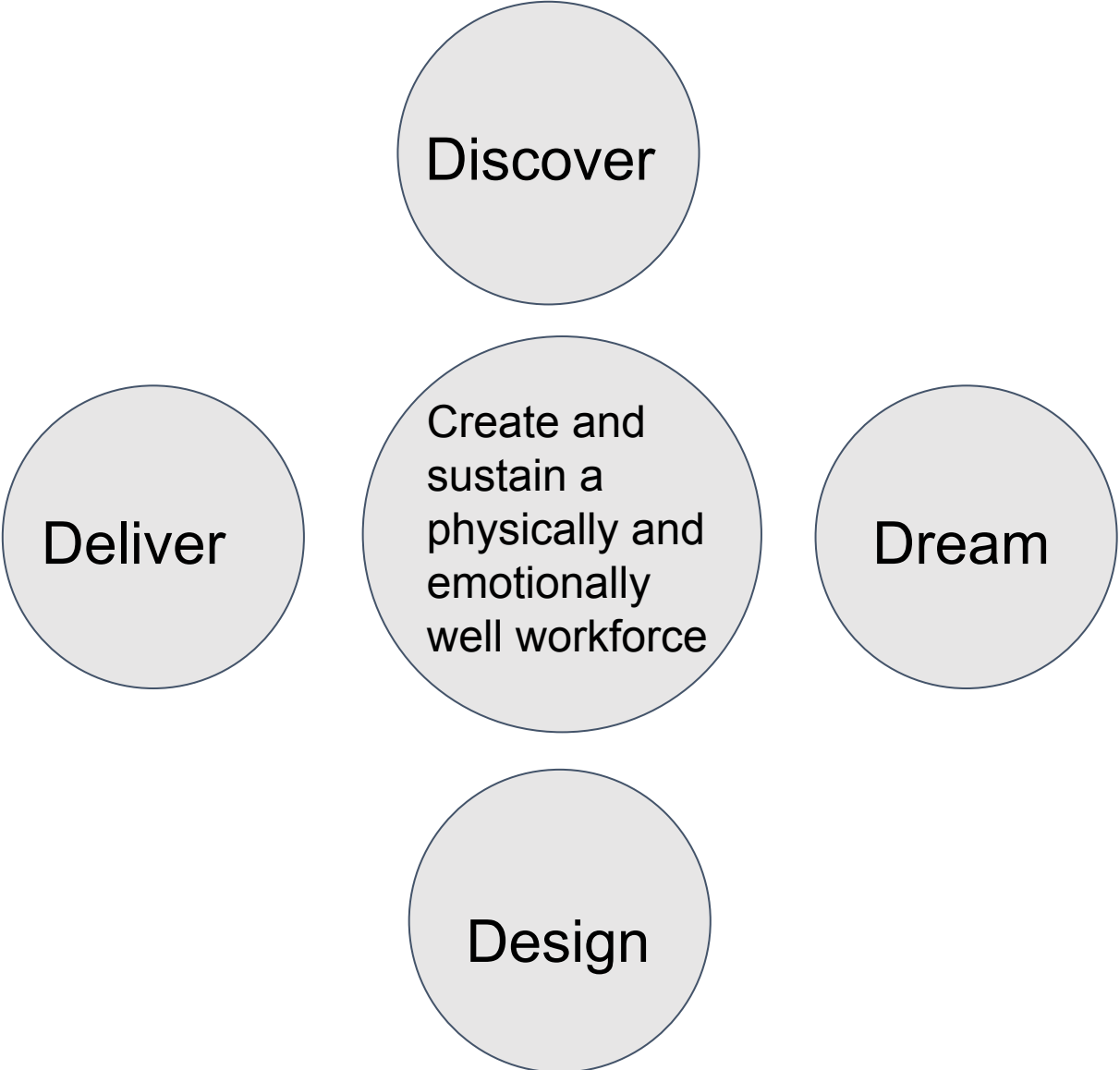
PCORE Milestones

- Q1 of the grant

| | | |
|-----------------|---|--|
| <p>1</p> | <ul style="list-style-type: none"> • Submit IRB paperwork to Marquette University IRB • Recruit PCORE Panel members • Meeting of PCORE staff to discuss design and purpose • Plan and prepare for 1st stakeholder panel meeting | <ul style="list-style-type: none"> • Pre- program assessment of Wilder Collaboration Factors Inventory • Obtain IRB training |
| <p>2</p> | <ul style="list-style-type: none"> • Create and share biosketches for all members • 1st Stakeholder Panel meeting with all stakeholders and PCORE staff | <ul style="list-style-type: none"> • PCORE members will gain confidence in their ability to talk to researchers and clinicians • PCORE members will learn about research processes, as well as an introduction to PCOR/CER |
| <p>3</p> | <ul style="list-style-type: none"> • Staff meeting to review 1st stakeholder panel meeting • Planning and preparation for 2nd stakeholder panel meeting • Onsite visit between Resource Officer and Research Leads | <ul style="list-style-type: none"> • Vision and Mission statement for PCORE, roles and responsibilities. |

How can PCORE help you?

Appreciative Inquiry exercise



Action items

- Biosketches
 - Highlights each individual's qualifications for a specific role in the proposed project.
 - We will draft and send them
- Reaching out to employees or retirees with multiple chronic conditions
- Research ethics training
- We will be scheduling our first lunch meeting with the anchor partner representatives over next 6 weeks.

Stakeholder panel meeting #2

- January 2019 – let's pull out our calendars!